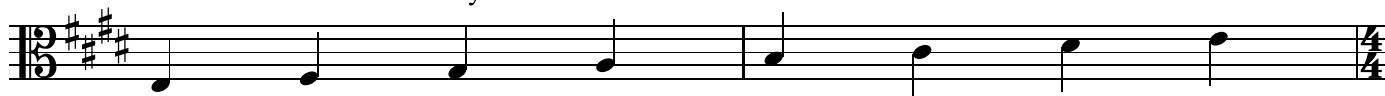


# E SIGHT-READING + RHYTHM EXERCISES

## Level 1

Alto Clef Instruments - Only Octave - "E" Scale



On this sheet, we will introduce 16th note/8th note combinations.  
This means that within 1 beat, there may be both 8th notes and 16th notes.

Remember that 8th notes are counted 1+2+3+4+.

Remember that 16th notes are counted 1-e+-a-2-e+-a-3-e+-a-4-e+-a.

There are 2 ways this can happen.

If there is an 8th followed by two 16ths (♩♫) it will be labeled 1-+-a.

If the two 16ths come first followed by an 8th (♫♩) it will be labeled 1-e+-.

3 **A**

A musical staff in alto clef, 12/8 time signature, key of E major. It contains four measures of music. The first measure has a quarter note (1) followed by two eighth notes (e, a). The second measure has a quarter note (2) followed by two eighth notes (3, a). The third measure has a quarter rest followed by two eighth notes. The fourth measure has a quarter rest followed by two eighth notes. Below the staff, the counts "1 + a 2 3 + a 4" are written.

7 **B**

A musical staff in alto clef, 12/8 time signature, key of E major. It contains four measures of music. The first measure has two eighth notes (1 e) followed by a quarter note (2). The second measure has two eighth notes (3 e) followed by a quarter note (4). The third measure has a quarter rest followed by two eighth notes. The fourth measure has a quarter rest followed by two eighth notes. Below the staff, the counts "1 e + 2 3 e + 4" are written.

11 **C**

A musical staff in alto clef, 12/8 time signature, key of E major. It contains four measures of music. The first measure has two eighth notes (1 e) followed by a quarter note (2). The second measure has two eighth notes (3 e) followed by a quarter note (4). The third measure has a quarter note (1) followed by two eighth notes (e, a). The fourth measure has a quarter note (2) followed by two eighth notes (3, a). Below the staff, there are no counts.

15 **D**

A musical staff in alto clef, 12/8 time signature, key of E major. It contains four measures of music. The first measure has two eighth notes (1 e) followed by a quarter note (2). The second measure has two eighth notes (3 e) followed by a quarter note (4). The third measure has a quarter note (1) followed by two eighth notes (e, a). The fourth measure has a quarter note (2) followed by two eighth notes (3, a). Below the staff, there are no counts.

19 **E**

A musical staff in alto clef, 12/8 time signature, key of E major. It contains four measures of music. The first measure has two eighth notes (1 e) followed by a quarter note (2). The second measure has two eighth notes (3 e) followed by a quarter note (4). The third measure has a quarter note (1) followed by two eighth notes (e, a). The fourth measure has a quarter note (2) followed by two eighth notes (3, a). Below the staff, there are no counts.

23 **F**

A musical staff in alto clef, 12/8 time signature, key of E major. It contains four measures of music. The first measure has two eighth notes (1 e) followed by a quarter note (2). The second measure has two eighth notes (3 e) followed by a quarter note (4). The third measure has a quarter note (1) followed by two eighth notes (e, a). The fourth measure has a quarter note (2) followed by two eighth notes (3, a). Below the staff, there are no counts.